

**Features**

- Durable poplar wood frame and MDF
- Handcrafted details
- 4 regular doors with Soft-close
- 2 interior removable shelves
- 3 regular drawers
- 6 Feet
- Black finished Hardware
- Adjustable height levelers
- Vanity accomodates single undermount sinks
- Under counter application

**Colours / Finishes**

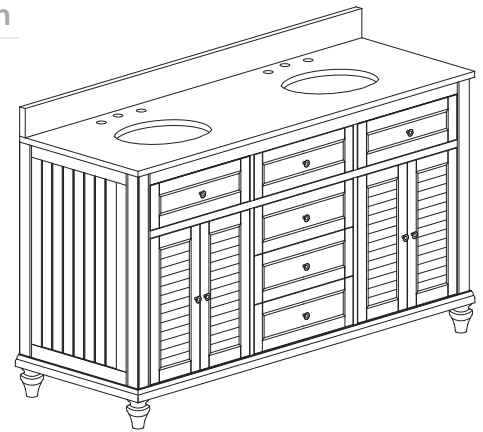
- Distressed White : 3 basecoat paint wash with 2 topcoats

**Dimension**

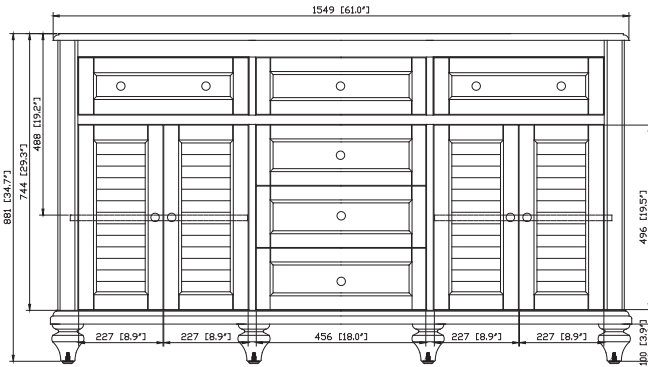
- 61W x 22D x 34.7H (inches)

**Material Country of Origin**

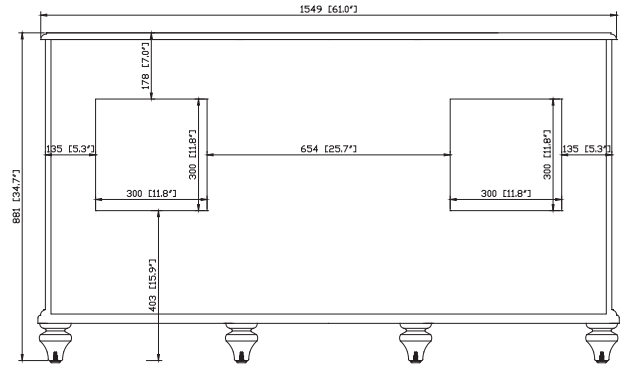
- Poplar timber - USA
- MDF panels - China
- Gray granite - China



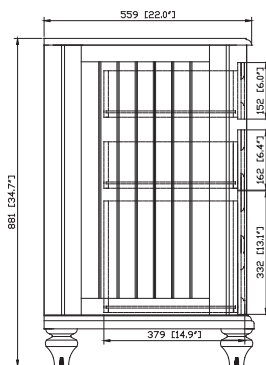
**Product Diagrams**



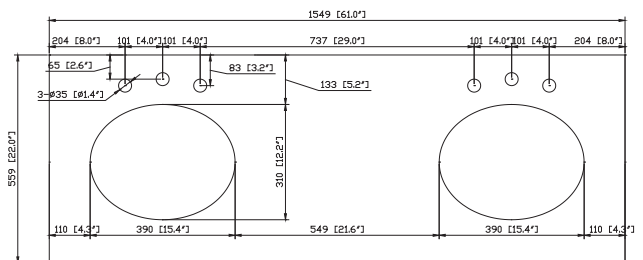
Front



Back



Side

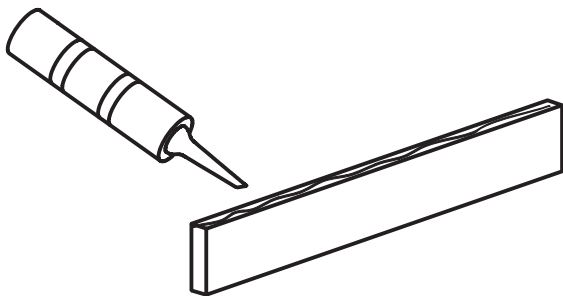


Top

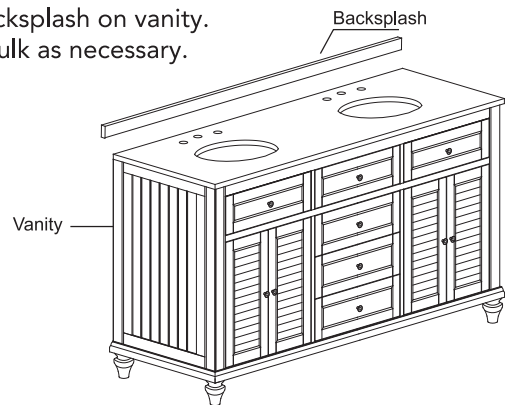
Backsplash Installation (Coordinating backsplash included. Vanity can be used with or without backsplash.)

- To install backsplash, you will need to purchase adhesive and caulk designed to work on granite.
- Please follow the manufacturer's application instructions included with the adhesive and caulk you purchased.
- It is recommended that you obtain appropriate recommendations from your local hardware supplier on adhesive and caulking.

Apply the adhesive along the bottom edge of backsplash.



Place backsplash on vanity.  
Apply caulk as necessary.



## Care and Cleaning Instruction

### Wooden Vanity

- Dust the vanity frequently with a clean, soft, dry, lint-free cloth, as well as polish it on a regular basis.
- Clean the surface by rubbing in the direction of the grain. Use furniture cleaners or polishes recommended by your local hardware store, following manufacturer's application and cleaning instructions. Avoid using silicone cleaners and waxes.
- Clean up excess water and spills immediately. Use a blotting rather than a wiping action. Water left over for a long period of time will cause white spots in the finish.

### Marble Vanity Top

- Marble is porous and easily stained. Wipe off anything spilled on it immediately. It should be washed or cleaned regularly with fresh warm water and a non-abrasive clean cloth. Also, using a non-abrasive, neutral (pH balanced) cleaner will help remove dirt and grime, but it is recommended to first try warm water only.
- Marble top has been sealed at the manufacturing facility. The sealer acts as a stain inhibitor and prevents most stains and soil from being absorbed into the porous surface, but it is NOT a guarantee against staining. All spills should be cleaned immediately. Avoid contact with all oils and petroleum-based products. Also, avoid contact with all acid or caustic products such as vinegar, citrus or fruit juices, soda, chlorine, and nail polish remover. If the marble is well sealed, the warm water and non-abrasive cloth should keep it clean.
- Every year the marble should be sealed with a good quality marble sealer. Marble sealers are available at most retail home supply stores. Follow the instructions on the sealer container for proper application and frequency of use.
- Placing protective pads on the bottom of any heavy objects will help prevent scratching of the marble surface. Periodically rotate accessories on marble so that they don't sit in the same spot for an extended period of time.

### Porcelain Sink

- Avoid using abrasive cleaners. Clean regularly with non-abrasive cleansers and non-scratching sponges.
- Wash sink with warm water, mild detergent and a damp cloth, or soft sponge. Rinse thoroughly using clean warm water.